

# LUNA



## Panel Fabrics

Luna Textiles' full collection of fabrics suitable for use in panel applications.



As we live in a world that's embracing a socially distant mindset, panel dividers within office spaces are becoming more popular. At Luna, we are happy to provide a wide assortment of textiles suitable for a variety of panel applications.

Within this guide, you'll find an overview of our Panel collection. This includes a highlight of our client favorites and a chart encompassing the entire collection.

FAQs | 03

Metro | 04

Aperto | 05

Demi | 06

Triad | 07

Stitch | 08

Trapeze | 09

Woohl | 10

Entire Collection | 09

Fabrics shown— (left to right)

This page: seat — Mason in Celadon; Panel — Framework in Morgan.

Cover: Blueprint in Woods; Stitch in Steam; Metro in Liverpool.



## Frequently Asked Questions

### **Where can I find information on how a product can be applied to a panel system?**

For a quick overview, please see page 11 of this document. Otherwise, there is more information on each of the product's pages on the Luna Textiles website.

### **Where can I find information on a product's acoustic rating?**

Talk to your local sales rep about this information. As this is very dependent on the substrate underneath the textile, it can vary significantly from project to project. They'll be able to help navigate the specifics of acoustics depending on what you're working on.

### **Where can I find the full details of how to clean Luna panel products?**

Each product has a cleaning code with maintenance details on our website. For more information on each code, please visit [lunatextiles.com/care-cleaning](https://lunatextiles.com/care-cleaning).

---

Did we miss something you're still curious about? Please connect with your sales rep or our customer service team with any questions.



# Metro

## Colorways

25 colorways

## Application

Upholstery, Panel

## Price

\$24

## Composition

51% Post- Consumer Recycled Polyester,  
49% Polyester

## Abrasion

100,000 double rubs (Wyzenbeek)

## Flammability

California technical bulletin 117-2013,  
ASTM E84 Class 1 (Unadhered)

## Finish

PFOA-Free Stain Resistant Finish

## Notes

Bleach cleanable



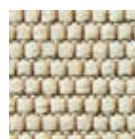
Times Square  
UTR901



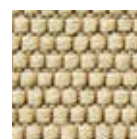
Westminster  
UTR902



Astor  
UTR903



Varenne  
UTR904



Avtovo  
UTR905



Concorde  
UTR906



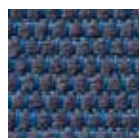
Waterloo  
UTR907



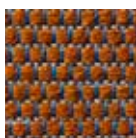
Union Square  
UTR908



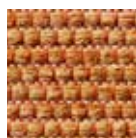
Victoria  
UTR909



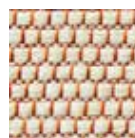
Oxford Circus  
UTR910



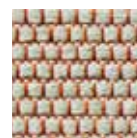
Liverpool  
UTR911



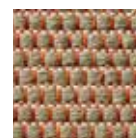
Paddington  
UTR912



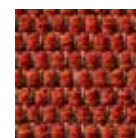
Grand Central  
UTR913



Penn  
UTR914



Van Ness  
UTR915



Monroe  
UTR916



Lexington  
UTR917



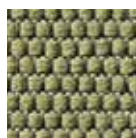
Castro  
UTR918



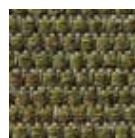
Lorimer  
UTR919



Toledo  
UTR920



Judah  
UTR921



Auber  
UTR922



London Bridge  
UTR923



Dearborn  
UTR924



Millennium  
UTR925



# Aperto

---

**Colorways**

9 colorways

**Application**

Upholstery, Panel, & Drapery

**Price**

\$43

**Composition**

100% Trevira CS

**Abrasion**

100,000 double rubs (Wyzenbeek)

**Flammability**

California Technical Bulletin 117-2013,  
ASTM E84 Class 1 (Unadhered),  
NFPA 701-2019

**Notes**

Bleach cleanable

Suitable for indoor/outdoor use



Linen  
UAP001



Path  
UAP002



Botanic  
UAP003



Turmeric  
UAP004



Nutmeg  
UAP005



Rustic  
UAP006



Spell  
UAP007



Midnight  
UAP008



Rail  
UAP009



# Demi

---

**Colorways**

12 colorways

**Application**

Upholstery, Panel, & Drapery

**Price**

\$35

**Composition**

70% Post-Consumer Recycled Polyester,  
30% Polyester

**Abrasion**

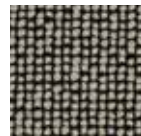
100,000 double rubs (Wyzenbeek)

**Flammability**

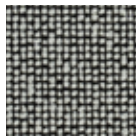
California Technical Bulletin 117-2013,  
ASTM E84 Class 1 (Unadhered), NFPA 701

**Notes**

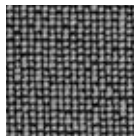
Bleach cleanable



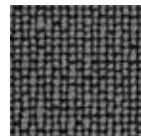
Pearl  
UDE001



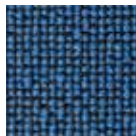
Note  
UDE002



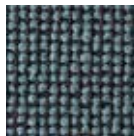
Marl  
UDE003



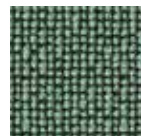
Fleck  
UDE004



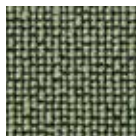
Lapis  
UDE005



Caspian  
UDE006



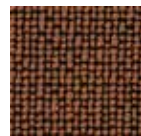
Inverness  
UDE007



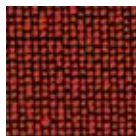
Croft  
UDE008



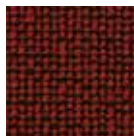
Curlicue  
UDE009



Pinto  
UDE010



Bauble  
UDE011



Redwood  
UDE012





# Triad

---

**Colorways**

15 colorways

**Application**

Upholstery, Panel, & Drapery

**Price**

\$38

**Composition**

100% FR Polyester

**Abrasion**

40,000 cycles (Martindale)

**Flammability**

California Technical Bulletin 117-2013, ASTM E84 Class 1 (Unadhered), NFPA 701-2019



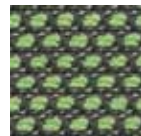
Trellis  
URI831



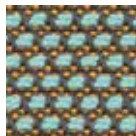
Rue De Anne  
URI832



Vista  
URI833



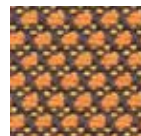
Fern  
URI834



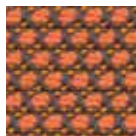
Ocean View  
URI835



Pool  
URI836



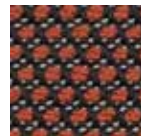
Landscape  
URI837



La Jolla  
URI838



Panoramic  
URI839



Brick  
URI840



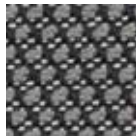
Smith  
URI841



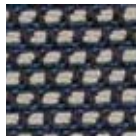
Coastline  
URI842



Courtyard  
URI843



Brady  
URI844



No. 23  
URI845



# Stitch

---

## Colorways

4 colorways

## Application

Panel

## Price

\$33

## Composition

100% Eco Intelligent® Polyester

## Flammability

ASTM E84 Class 1 (Unadhered)



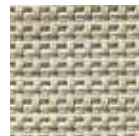
Oxygen  
USI021



Steam  
USI022



Cinder  
USI023



Basket  
USI024





# Trapeze

---

**Colorways**

13 colorways

**Application**

Upholstery, Panel

**Price**

\$25

**Composition**

50% Post-Consumer Recycled Polyester,  
50% Polyester

**Abrasion**

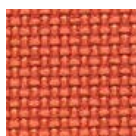
100,000 double rubs Wyzenbeek

**Flammability**

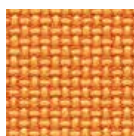
California Technical Bulletin 117 E, ASTM E84  
Class 1 (Unadhered), NFPA 260



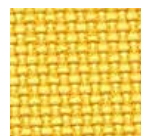
Carousel  
UPZ271



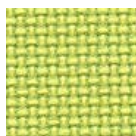
Parade  
UPZ272



Chapiteau  
UPZ273



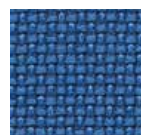
Acrobat  
UPZ274



Flyer  
UPZ275



Aerial  
UPZ276



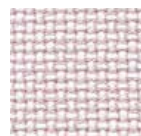
Pantomime  
UPZ277



Pirouette  
UPZ278



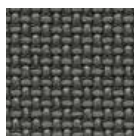
Adagio  
UPZ279



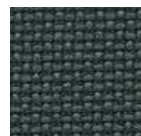
Highwire  
UPZ280



Flic-Flac  
UPZ281



Cigar Box  
UPZ282



Mecanique  
UPZ283



# Woohl

---

**Colorways**

14 colorways

**Application**

Upholstery, Panel

**Price**

\$28

**Composition**

60% Post-Consumer Recycled Polyester,  
40% Polyester

**Abrasion**

100,000 double rubs (Wyzenbeek)

**Flammability**

California Technical Bulletin 117-2013,  
ASTM E84 Class 1 (Unadhered)



Evening  
UHL571



Matrix  
UHL572



Fog  
UHL573



Camellia  
UHL574



Darling  
UHL575



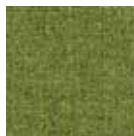
Sassy  
UHL576



Beeswax  
UHL577



Camel  
UHL578



Marsh  
UHL579



Drake  
UHL580



Submarine  
UHL581



Eddy  
UHL582



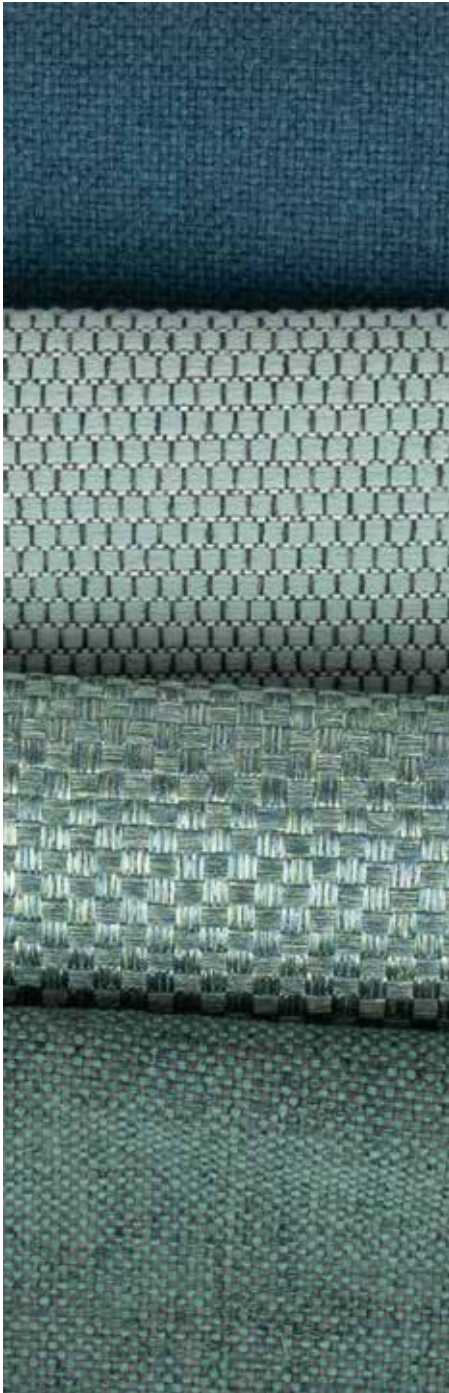
Lagoon  
UHL583



Anchor  
UHL584







Textiles	No. of Colorways	Price	ASTM E84 Class 1 (Unadhered)	ASTM E84 Class 1 (Adhered) <sup>†</sup>	Tackability	Bleach Cleanable
Acolyte	9 Colorways	\$73/Yard	●		●	●
Affinity	4 Colorways	\$63/Yard	●			
Aperto	9 Colorways	\$43/Yard	●		●	●
Aspect	3 Colorways	\$60/Yard	●			
Demi	12 Colorways	\$35/Yard	●		●	●
Facet	3 Colorways	\$60/Yard	●			
Framework	9 Colorways	\$35/Yard	●		●	●
Hatch Too	18 Colorways	\$42/Yard	●		●	
Hush	13 Colorways	\$50/Yard	●		●	
Jaunty	5 Colorways	\$45/Yard	●		●	
Luminescente	7 Colorways	\$35/Yard	●	●	●	
Metro	25 Colorways	\$24/Yard	●		●	●
Nifty	10 Colorways	\$25/Yard	●		●	
Notion	13 Colorways	\$28/Yard	●		●	
Sparkle	8 Colorways	\$43/Yard	●		●	
Stitch	4 Colorways	\$33/Yard	●		●	
Switchback	6 Colorways	\$45/Yard	●		●	
Trapeze	13 Colorways	\$25/Yard	●		●	
Triad	15 Colorways	\$38/Yard	●		●	
Twilight 2.0	4 Colorways	\$36/Yard	●		●	
Woohl	14 Colorways	\$28/Yard	●	●	●	

<sup>†</sup> All products marked as approved for adhered application require the addition of a heavy acrylic backing.

L U N A

