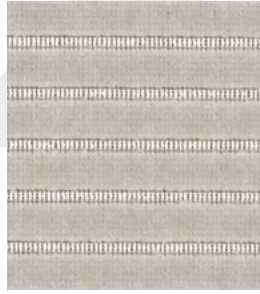


Wide Wale



Hoffman
UWW201



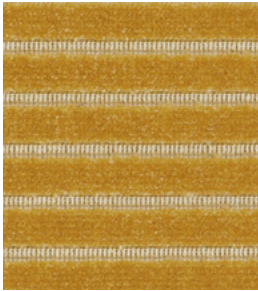
Dylan
UWW202



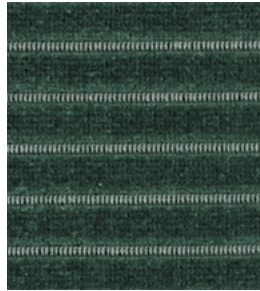
Bardot
UWW210



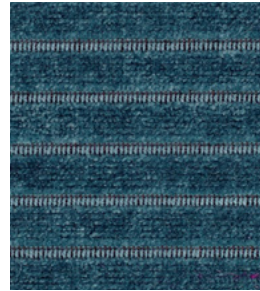
Lennon
UWW203



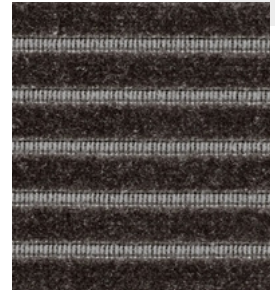
Jane
UWW209



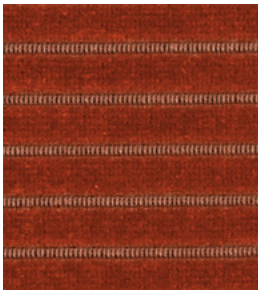
Rickert
UWW213



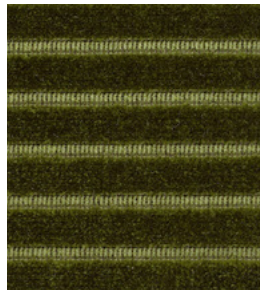
Ringo
UWW204



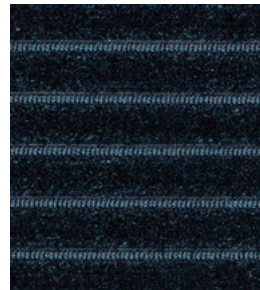
Newman
UWW214



Raleigh
UWW211



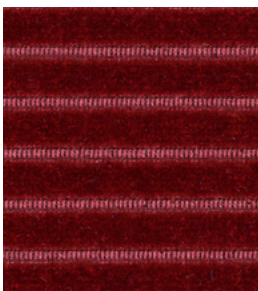
McQueen
UWW208



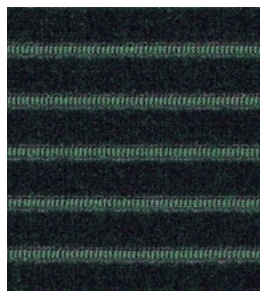
Ripley
UWW205



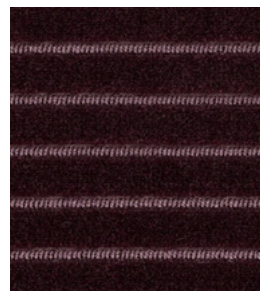
Lorenzo
UWW215



Redford
UWW212



Jagger
UWW206



Anderson
UWW207



Wide Wale

Photographic fabric scans are not color accurate. Always request actual fabric samples before ordering.

L U N A

Wide Wale

Specifications



Application:	Upholstery
Content:	61% Acrylic, 39% Polyester
Finish:	None
Backing:	None
Width:	56"
Repeat:	0.43"
Weight:	19 ^{1/2} oz/ly (615g/lm)

Performance

Warranty:	3 years
Country of Origin:	Germany
Flammability:	California Technical Bulletin 117
Abrasion:	100,000 double rubs (Wyzenbeek)
Lightfastness:	Class 4 (40 hours)
Maintenance:	W/S - Clean with a water-based cleaning agent or solvent: Depending on the stain, you can use a dry-cleaning solvent, the foam of a mild detergent, or upholstery shampoo. For deeper cleaning use bleach. Can be washed at 86F.

Environmental

AB 2998 Compliant, Prop 65 Compliant,
PFAS Free, FR Free

Complete specifications can be found at lunatextiles.com

Product Story

Inspired by '60s and '70s corduroy, Wide Wale is a bold velvet with a signature wide pleat. Available in 15 rich colors named after cultural icons, it blends vintage style with modern appeal. Bleach cleanable up to a 10% solution, Wide Wale is both stylish and practical for today's interiors.

Note: Wide Wale is dual direction, so can be upholstered either horizontally (off the roll), or vertically (railroaded).

© 2021 Luna Textiles. Wide Wale is a proprietary design owned by Luna Textiles. It is not to be duplicated or translated in any form or format by any party without the prior written consent of Luna Textiles.

lunatextiles.com | camirafabrics.com | tel +1 616 288 0655

UWW (TSR1) 0525 Y

L U N A
a **camira** brand