

Terrene



Perla UTE001



Sea Glass UTE10



Blue Lace UTE11



Danburite UTE002



Serpentine UTE009



Ginko UTE003



Emerald UTE008



Azzuro UTE12



Cordierite UTE13



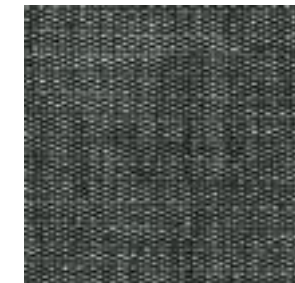
Amber UTE005



Tonna UTE004



Karst UTE14



Bardiglo UTE15



Mesa UTE006



Red Jasper UTE007

Terrene

Specifications



Application:	Upholstery
Content:	70% Nylon, 18% Polyester, 12% Linen
Finish:	None
Backing:	None
Width:	54"
Repeat:	None
Weight:	17.4 oz/ly (540g/lm)
Warranty:	3 years
Country of Origin:	Belgium

Performance

Flammability:	California Technical Bulletin 117-2013
Abrasion:	100,000 double rubs (Wyzenbeek)
Lightfastness:	40+ hours
Maintenance:	S - Clean with mild, water-free dry cleaning solvent

Environmental

SCS Indoor Advantage™ Gold, Contains Bio-Based Materials, Contains Rapidly Renewable Materials, FR Free

Complete specifications can be found at lunatextiles.com

Product Story

Terrene is a contemporary and refined chenille piece-dye. Its appeal rests in having an ultra-soft hand and nature inspired palette. Balancing natural linen fiber with performance forward components, Terrene embraces a natural aesthetic, while being engineered for high traffic use.

L U N A

www.lunatextiles.com | tel 415.252.7125 | [@lunatextiles](https://twitter.com/lunatextiles)

© 2021 Luna Textiles. Terrene is a proprietary design owned by Luna Textiles. It is not to be duplicated or translated in any form or format by any party without the prior written consent of Luna Textiles.